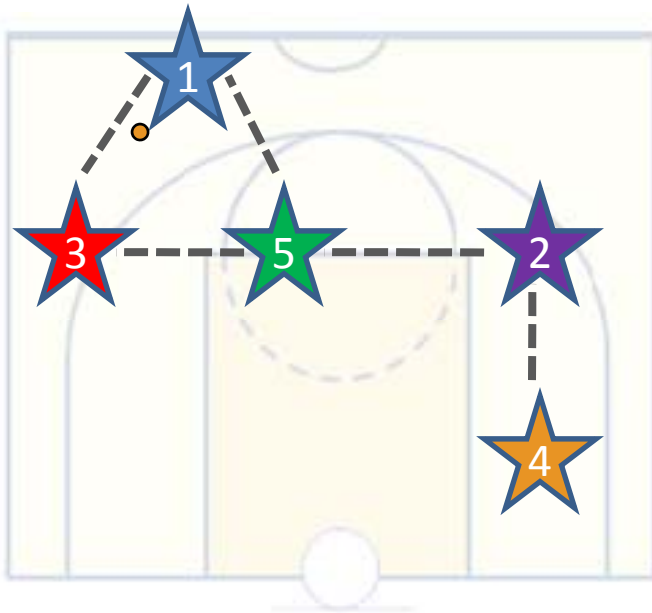


The Triangle Offense

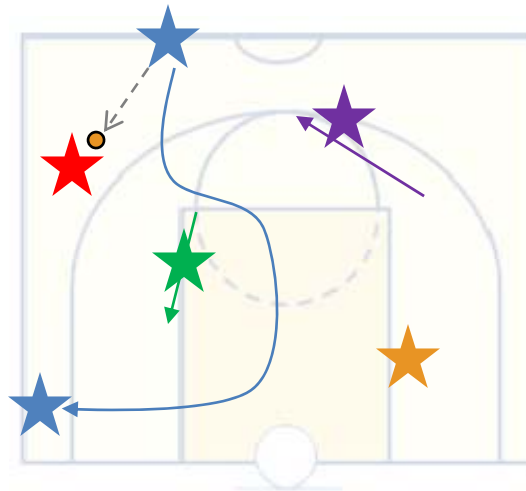
The basics of an offensive scheme involving a triangle and a two-man game.



Setup:

The triangle and the two-game requires good spacing – at least 12-15 feet.

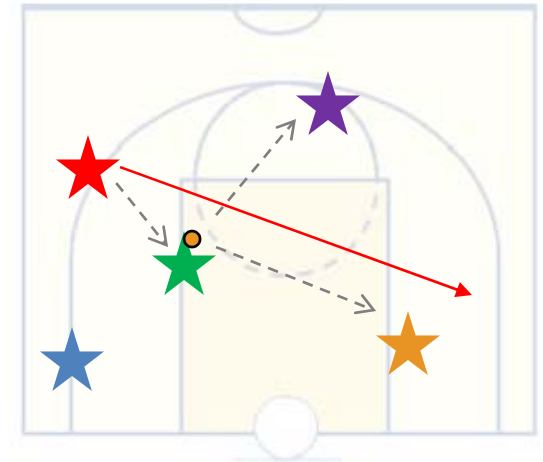
If and when the ball is passed out of the triangle, the two-man game begins on the opposite side of the court.



Entry Pass:

The point guard (blue) cuts to the corner – in this case using a misdirect approach.

Player 2 (purple) moves to the top of the key for easier outlet pass.



Second Pass:

With blue, red and green in the triangle, the pass comes to green post player, who can pass to the weak side (purple/orange) if their defenders collapse into the key.

Cutting without the ball is critical! For example, red can cut to the opposite corner after passing to the green post.