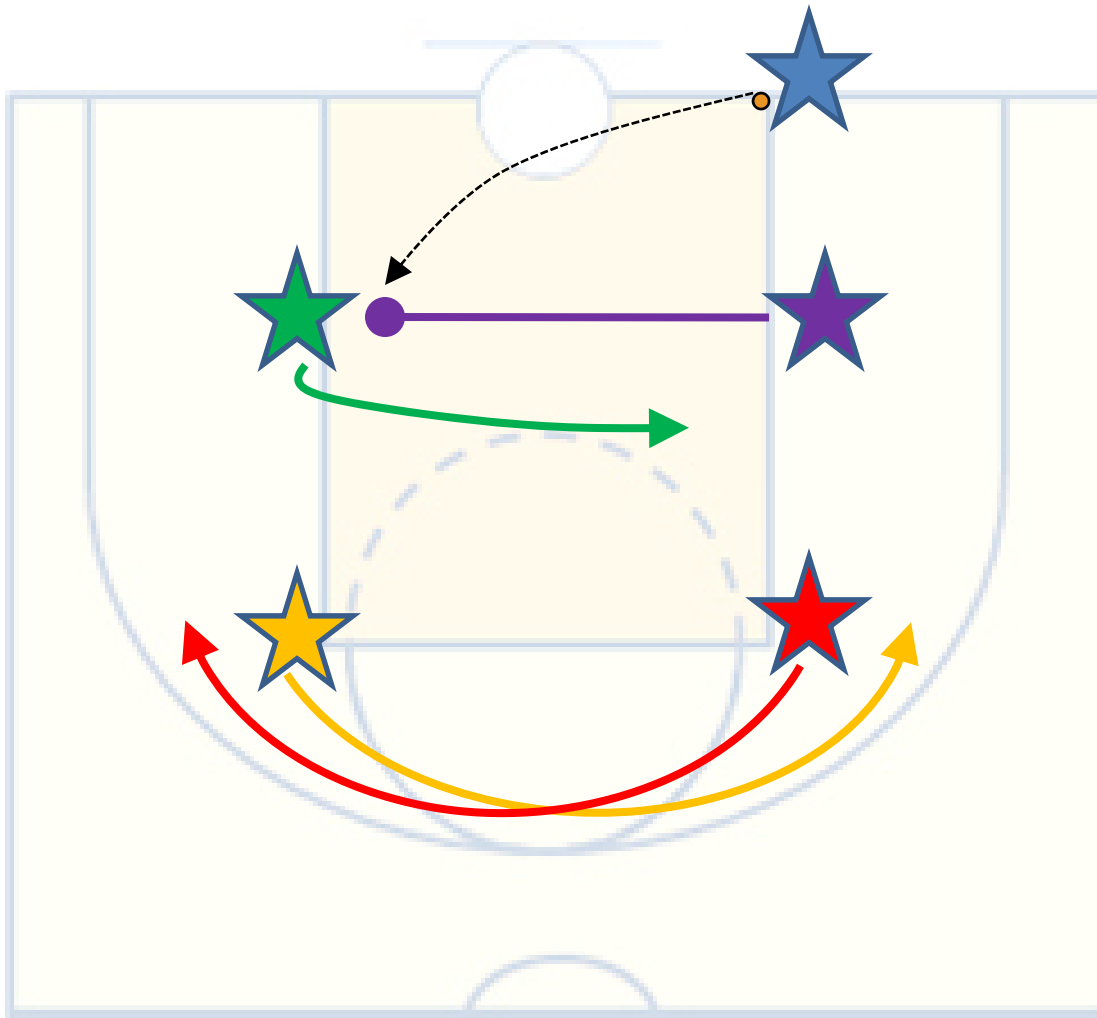


# The “Box-Low” Out-of-Bounds Play

An out-of-bounds play for inbounding underneath the offensive basket.



## Execution:

- The post player closest to the ball (**purple**) is the first option. This player cuts across the lane sets a screen for the other player (**green**). The **purple** post player must pivot and close out the defensive player as the ball is inbounded.
- The **green** player goes around the screen once it is in place (WAIT!) and cuts across the lane in the direction of the ball. This is Option 2.
- The **red** and **orange** players on outside away from the ball crisscross to each other's win spots. A good 3<sup>rd</sup> and 4<sup>th</sup> option if the play breaks down.