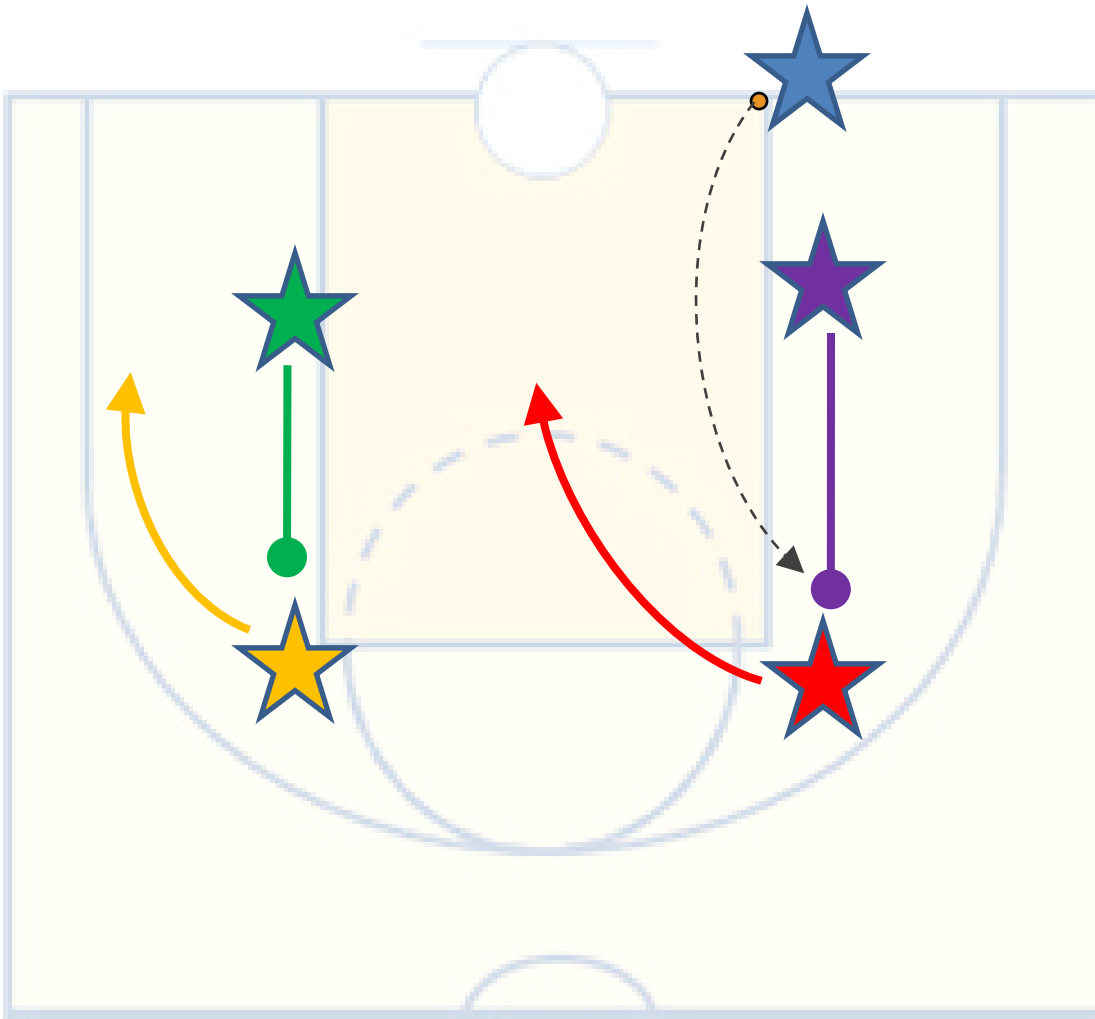


# The “Box-High” Out-of-Bounds Play

An out-of-bounds play for inbounding underneath the offensive basket.



## Execution:

- The post player closest to the ball (purple) is the first option. This player cuts to the elbow and sets a screen for the guard at the top of the key (red). The purple post player must turn and close out the defensive player as the ball is inbounded.
- The red guard closes to the ball should not move until the screen is set. Break second and cut to lane as a 2<sup>nd</sup> option.
- The far post player (green) does the same cut and turn as the other post player and is the 3<sup>rd</sup> option.
- The far guard (orange) uses the screen set by green post to cut to the corner of the court, a potential 3-point shooter near the baseline. Option 4.