

## DESCRIPTION

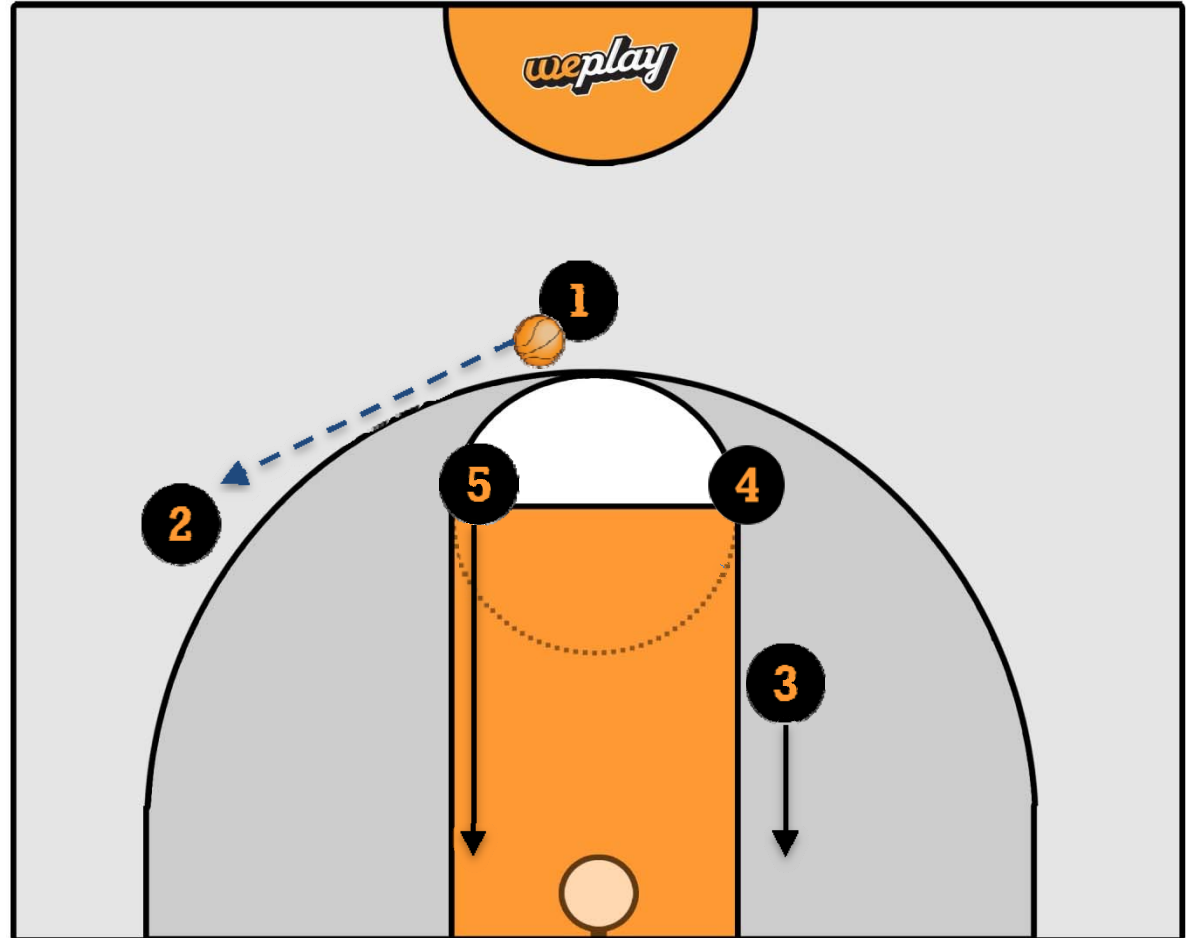
This offensive set is supposed to break either a 2-3 or 2-1-2 defensive zone and finish with an open layup for the (1).

1. The (1) begins by passing the ball to the (2) at the wing while (5) and the (3) drop down to the closest block.
2. The (1) would then cut hard through the key as the (4), (3), and (5) screen off the man closest to them in the zone.
3. The (2) will promptly pass to the cutting (1) by the time he/she reaches the middle of the paint.
4. The (1) then continues to finish the wide open layup.

CATEGORY Offense

## PLAY NAME

# Offensive Zone Breaker Play: "Smash"



## DESCRIPTION

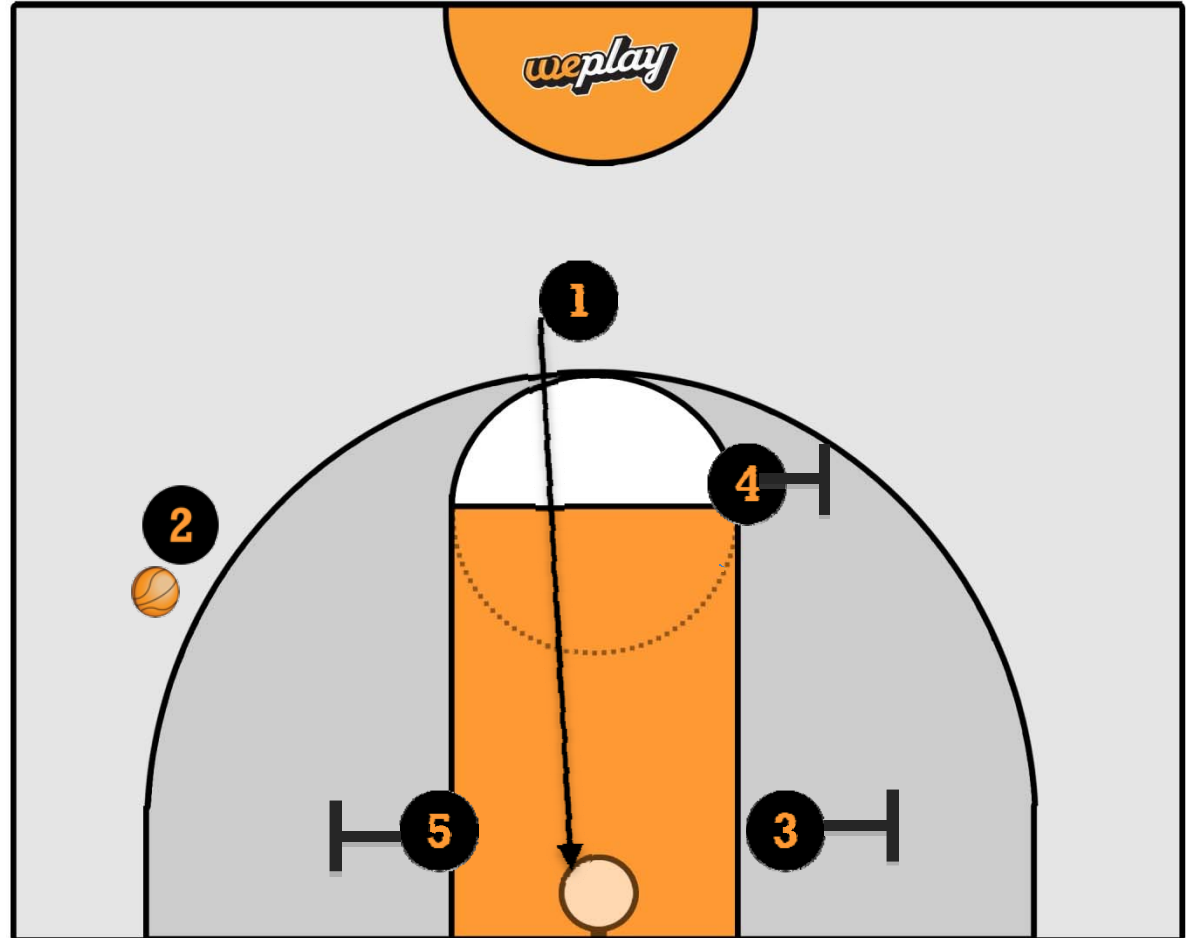
This offensive set is supposed to break either a 2-3 or 2-1-2 defensive zone and finish with an open layup for the (1).

1. The (1) begins by passing the ball to the (2) at the wing while (5) and the (3) drop down to the closest block.
2. The (1) would then cut hard through the key as the (4), (3), and (5) screen off the man closest to them in the zone.
3. The (2) will promptly pass to the cutting (1) by the time he/she reaches the middle of the paint.
4. The (1) then continues to finish the wide open layup.

CATEGORY Offense

## PLAY NAME

# Offensive Zone Breaker Play: "Smash"



## DESCRIPTION

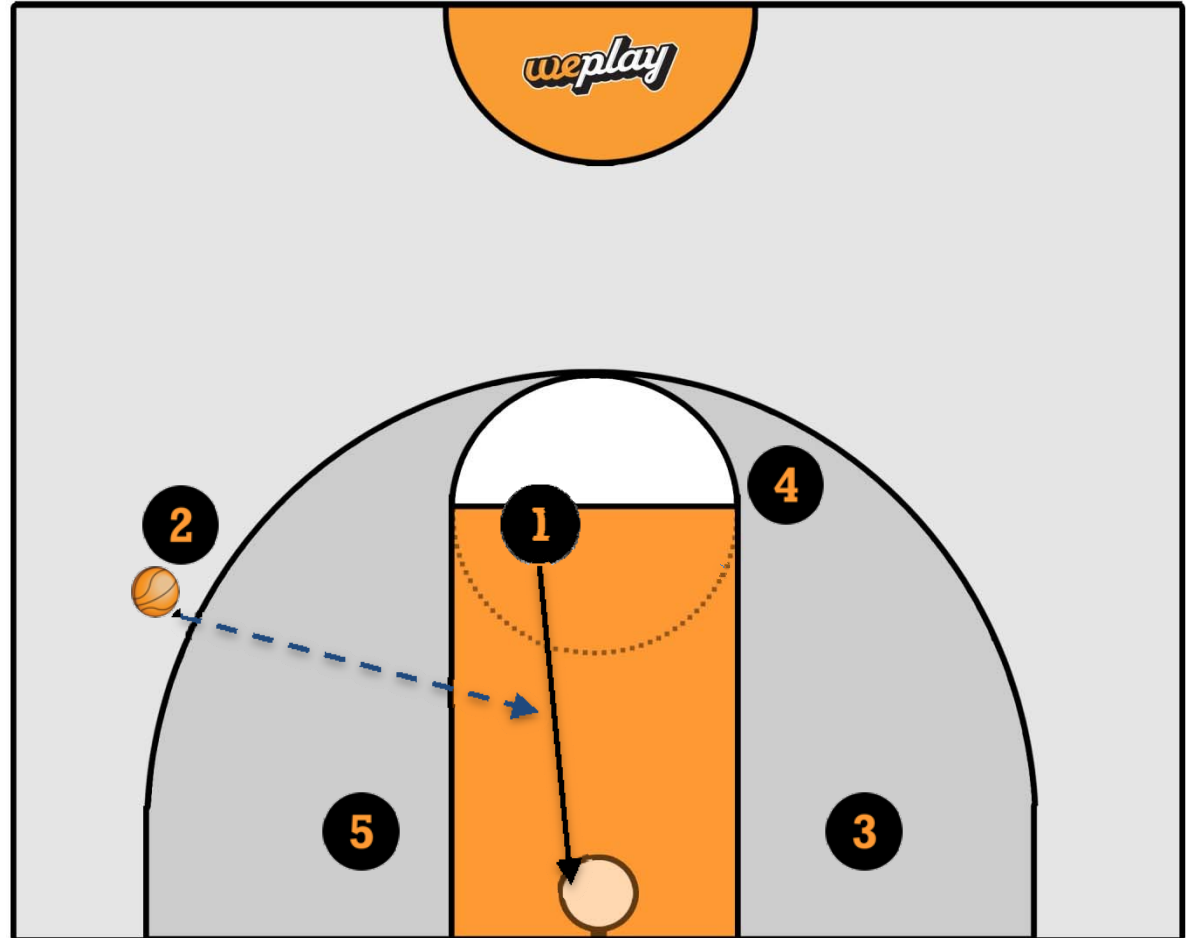
This offensive set is supposed to break either a 2-3 or 2-1-2 defensive zone and finish with an open layup for the (1).

1. The (1) begins by passing the ball to the (2) at the wing while (5) and the (3) drop down to the closest block.
2. The (1) would then cut hard through the key as the (4), (3), and (5) screen off the man closest to them in the zone.
3. The (2) will promptly pass to the cutting (1) by the time he/she reaches the middle of the paint.
4. The (1) then continues to finish the wide open layup.

CATEGORY Offense

## PLAY NAME

# Offensive Zone Breaker Play: "Smash"



## DESCRIPTION

This offensive set is supposed to break either a 2-3 or 2-1-2 defensive zone and finish with an open layup for the (1).

1. The (1) begins by passing the ball to the (2) at the wing while (5) and the (3) drop down to the closest block.
2. The (1) would then cut hard through the key as the (4), (3), and (5) screen off the man closest to them in the zone.
3. The (2) will promptly pass to the cutting (1) by the time he/she reaches the middle of the paint.
4. **The (1) then continues to finish the wide open layup.**

CATEGORY Offense

## PLAY NAME

# Offensive Zone Breaker Play: "Smash"

