

## DESCRIPTION

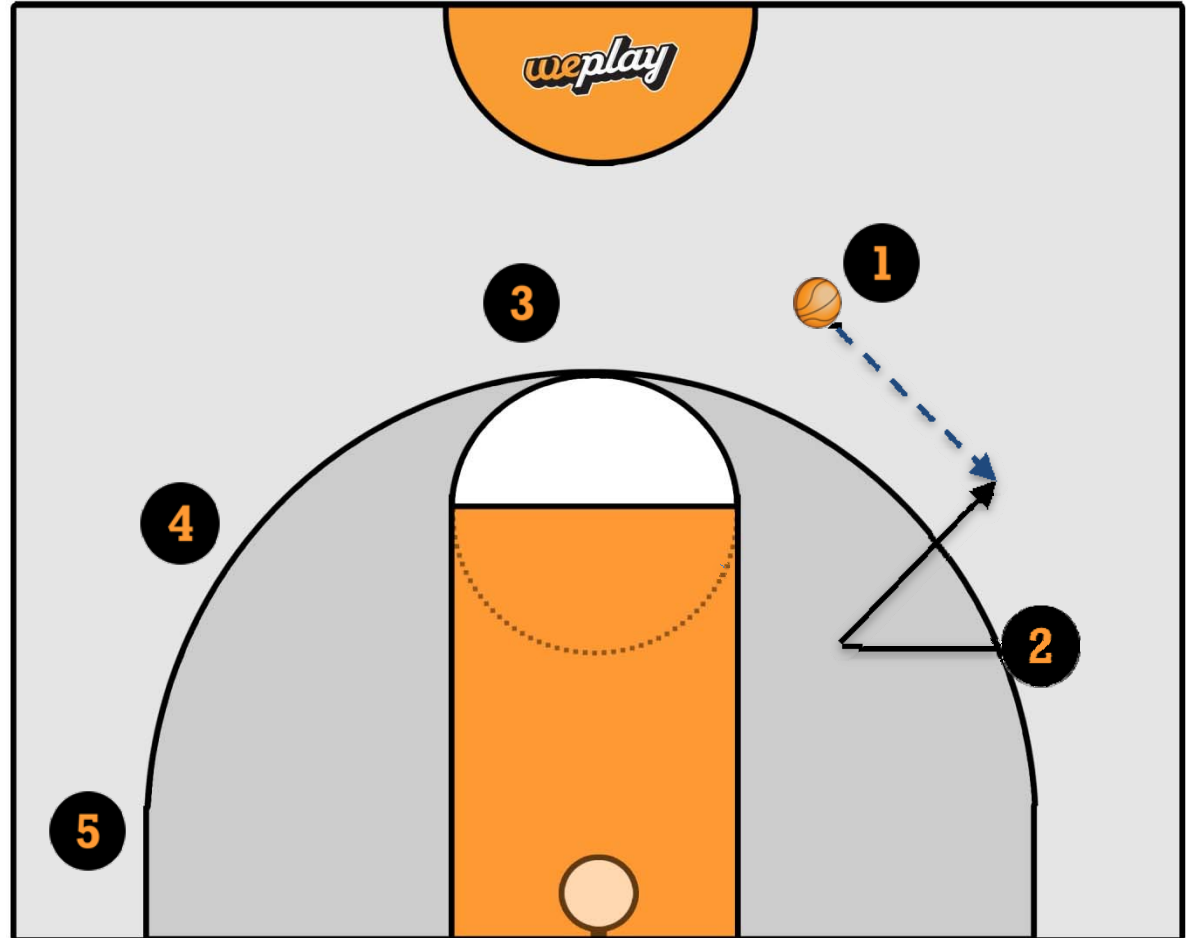
This play allows a one-on-one opportunity for an offensive player with a mismatched defender.

1. The (2) or whichever offensive player has a mismatch cuts to the right and then comes back to meet the pass from the (1).
2. With the court spaced out, the (2) will take his/her defender off the dribble to the basket ideally for a layup.

CATEGORY Offense

## PLAY NAME

# Offensive Wing Isolation Play



## DESCRIPTION

This play allows a one-on-one opportunity for an offensive player with a mismatched defender.

1. The (2) or whichever offensive player has a mismatch cuts to the right and then comes back to meet the pass from the (1).
2. **With the court spaced out, the (2) will take his/her defender off the dribble to the basket ideally for a layup.**

CATEGORY Offense

## PLAY NAME

# Offensive Wing Isolation Play

